



RELO TRACKER REPORT

TRACKING CORPORATE
RELOCATIONS TO TEXAS IN 2021

2022 EDITION



ABOUT YTEXAS

YTexas is an elite Texas business network for companies relocating, expanding and growing in the Lone Star State. The organization is the premier go-to resource for the most current insider information about Texas' community, commerce and culture. YTexas provides a platform for the exchange of information and ideas, and fosters long-term, mutually beneficial relationships that help culturally integrate companies entering Texas. Headquartered in Austin, YTexas has received national acclaim for being at the forefront of economic development trends. Visit YTexas.com to learn more.

Media Contact: Jordan Brown, jbrown@piercom.com





EXECUTIVE SUMMARY

In 2021, 62 corporations relocated their headquarters to Texas. These companies relocated from 17 states and three countries.

California had the highest corporate migration with 25 companies choosing to relocate their headquarters to Texas. The United Kingdom represented the most international corporate relocations to Texas (four companies), followed by Israel (three companies) and Sweden (one company).

Central Texas significantly outpaced the rest of the state with 29 new corporate relocations to cities within the region. North Texas had the second-highest with 27 corporate relocations in 2021.

The 62 corporations that relocated to Texas represented 15 different industries. Technology was the leading industry relocating to the state followed by manufacturing.

Texas has one of the largest economies in the world, a lower cost of living, favorable tax rates, fewer regulations, and access to top-tier talent.

About the 2022 edition of the YTexas Relo Tracker Report

Data for the Relo Tracker Report is aggregated through independent research by YTexas. The report provides annual relocation data for corporations announcing their relocation to Texas within a calendar year. To view the Relo Tracker in its entirety, visit YTexas.com/relo-tracker.

TEXAS NEWCOMERS

Many regions of Texas benefitted from the heavy corporate migration to the state from a wide array of industries. Technology and Manufacturing featured prominently but 15 different industries in total have found their home across the state.



ALLEN

MD7

AUSTIN

Alpha Paw
Blockcap
BSU Inc.
Crowdstreet
Digital Realty
Einride
Eleiko
F45 Training
Green Dot
Harmonate
INVZBL
Markaaz
Quaili
REE Automotive
Tesla
Truelytics
XR Masters
ZP Better Together
City Shoppe
Loop Insurance
Precision Global Consulting
QSAM Biosciences
Sentry Kiosk
Spiritless
Touchdown PR
NinjaRMM

ORIGIN

San Diego, CA

ORIGIN

Las Vegas, NV
Las Vegas, NV
Ithaca, NY
Portland, OR
San Francisco, CA
Sweden
Chicago, IL
Los Angeles, CA
Pasadena, CA
San Jose, CA
Charlotte, NC
Los Angeles, CA
Israel
Israel
Palo Alto, CA
Boston, MA
Chicago, IL
Rocklin, CA
Portland, OR
Washington D.C.
New York, NY
Palm Beach, FL
Minnetonka, MN
Louisville, KY
United Kingdom
San Francisco, CA

DALLAS

5G LLC
AECOM
BackBox
Drive Shack
First Foundation Inc.
Hall Technologies
Lion Real Estate Group
Therabody
Three Whiskey
TOCA Social
Wedgewood LLC

DENTON

Ranchland Foods

FORT WORTH

Flannery Trim
Schumacher Electric
SmartAction
Old Gringo Boots

ORIGIN

Bethesda, MD
Los Angeles, CA
Israel
New York, NY
Irvine, CA
Tustin, CA
Los Angeles, CA
Los Angeles, CA
United Kingdom
United Kingdom
Redondo, CA

ORIGIN

Vernon, AZ

ORIGIN

San Fernando, CA
Mt Prospect, IL
El Segundo, CA
San Diego, CA

FRISCO

Wiley X

HOUSTON

Maddox Defense
SPB Hospitality
Sunhaven

IRVING

Coury Hospitality
Gordon Ramsay NAM

LEANDER

Cangshan Cutlery

NORTH RICHLAND HILLS

ProtectAll

PLANO

Katapult
Ribbon Communications
Tappit

ROUND ROCK

Amazing Magnets
Ametrine

SAN ANTONIO

Cuisine Solutions
Nissei America
Dbtech

SOUTHLAKE

Likewise
Restaurant Revolution Tech

SULPHUR SPRINGS

D6 Inc.

ORIGIN

Livermore, CA

ORIGIN

San Diego, CA
Nashville, TN
Los Angeles, CA

ORIGIN

Tusla, OK
Los Angeles, CA

ORIGIN

Chino, CA

ORIGIN

Deerfield Beach, FL

ORIGIN

New York, NY
Westford, MA
United Kingdom

ORIGIN

Anaheim, CA
Rockville, MD

ORIGIN

Alexandria, VA
Anaheim, CA
Edison, NJ

ORIGIN

Miami, FL
Bellevue, WA

ORIGIN

Portland, OR

CORPORATE RELOCATIONS TO TEXAS

IN 2021



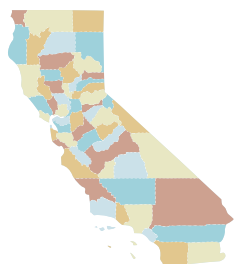
62 Corporate Relocations to Texas in 2021



17 Origin States



3 Origin Countries



25 Corporate Relocations from California

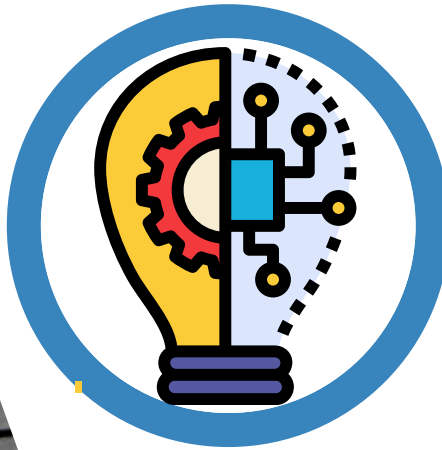


CORPORATE RELOCATIONS TO TEXAS

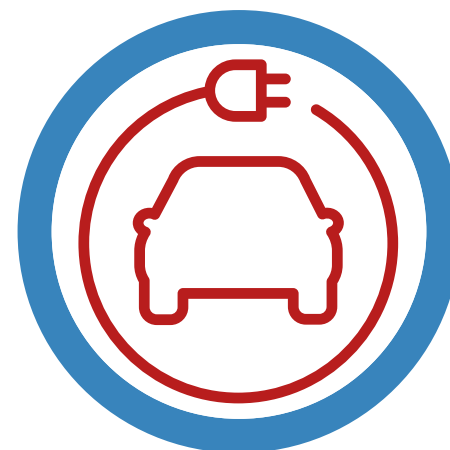
IN 2021



**15 Industries Relocated
to Texas**



**Technology was the Top
Industry that Relocated
to Texas**

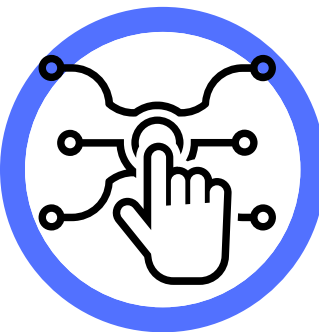


**Tesla was the Most
Noteworthy Corporate
Relocation**

CENTRAL TEXAS



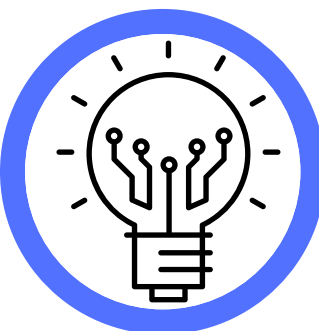
29 Corporate Relocations to Central Texas



12 Industries Relocated to Central Texas



10 Corporate Relocations from California



Tech was the Top Industry That Relocated to Central Texas



4 International Corporate Relocations to Central Texas

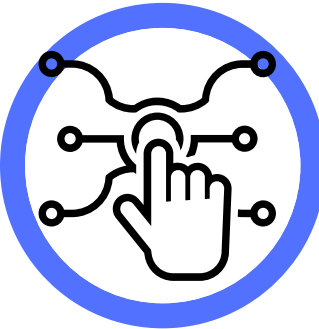


Israel was the Top Country That Relocated to Central Texas

NORTH TEXAS



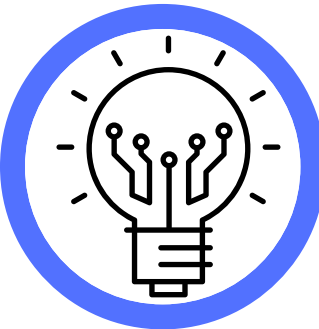
27 Corporate Relocations to North Texas



11 Industries Relocated to North Texas



12 Corporate Relocations From California



Tech was the Top Industry That Relocated to North Texas



4 International Corporate Relocations to North Texas



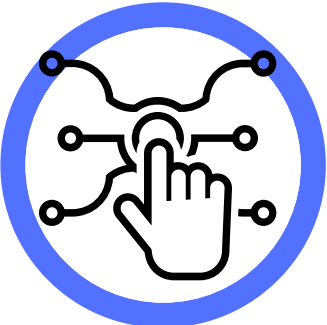
North Texas had the Most International Relocations From the United Kingdom



SOUTH TEXAS



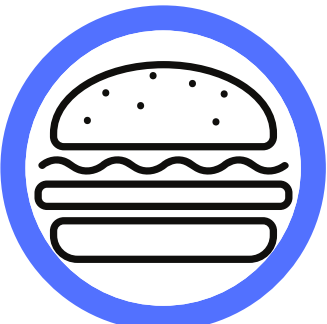
3 Corporate Relocations to South Texas



3 Industries Relocated to South Texas



1 Corporate Relocation from California

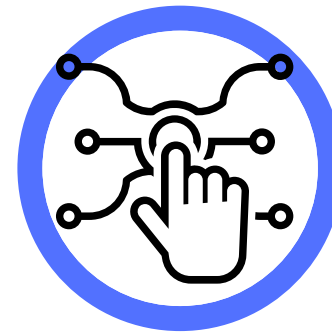


Technology, Food & Beverage, & Manufacturing Were the Top Relocating Industries

TEXAS GULF COAST



3 Corporate Relocations to the Texas Gulf Coast



3 Industries Relocated to the Texas Gulf Coast



2 Corporate Relocations from California



Hospitality, Defense, & Manufacturing were the Top Relocating Industries